

European private forest owners: the art of typology creation and their use

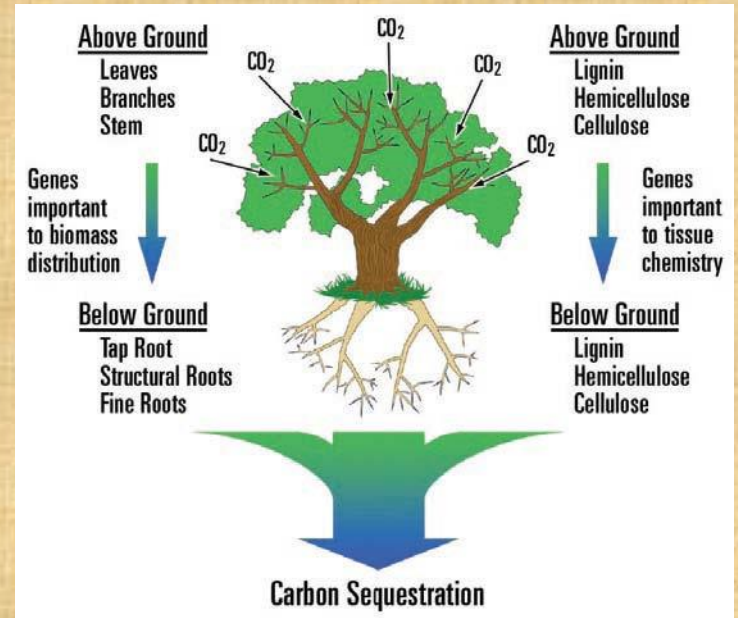
Gun Lidestav, Áine Ní Dhubháin,
Heimo Karpinnen, Ivana Zivojinovic,
Kerstin Westin and Andrej Ficko

Background

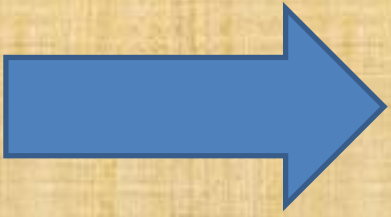
Diversification of owners



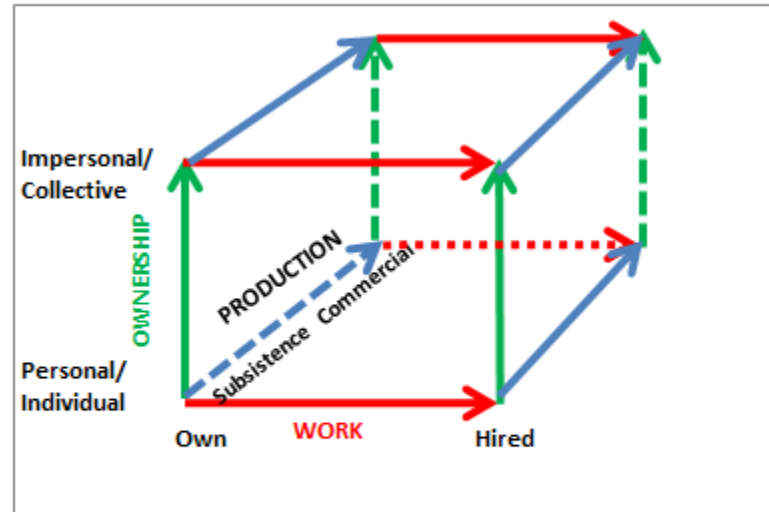
Increasing demands on forests



Need to understand owners and their behaviour



Framing forest ownership



Framing forest ownership

- Typologies – “Systems used for putting things into groups according to how they are similar”
- Based on:
 - Structural attributes (of owners/forest)
 - Single attribute
 - Multiple attributes
 - Forest owner values and objectives

Aim of presentation

- To review the development of the private forest owner (PFO) typologies in Europe with regard to:
 - research approaches and methods used for developing owner typologies
 - content and themes addressed
 - policy and management recommendations expressed
- Assess the use of typologies in education and science, and by stakeholders and policy-makers

How did we review methods?

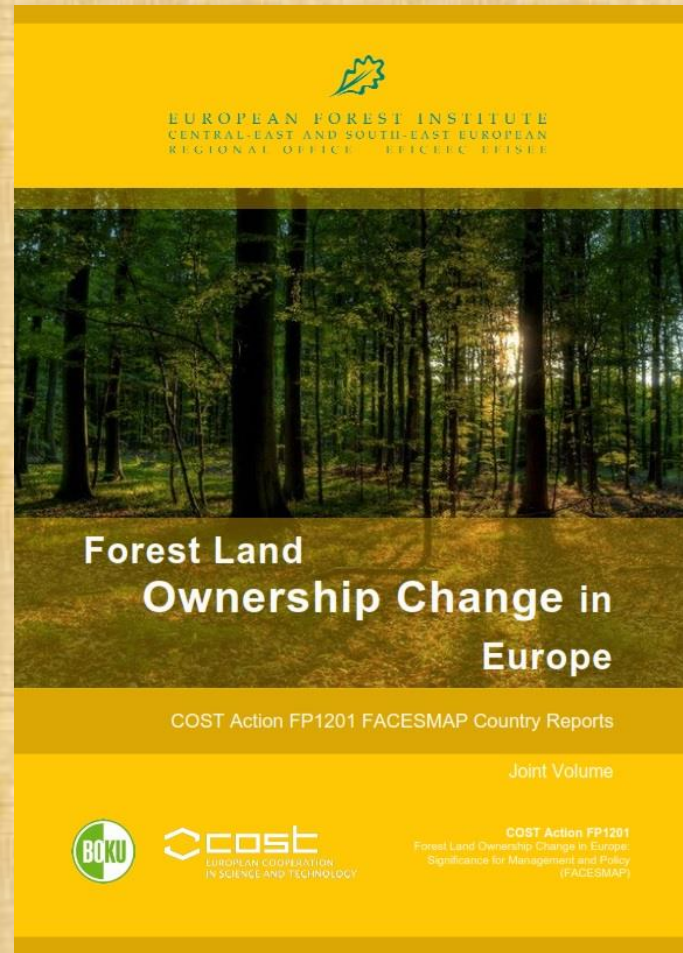
- European PFO typologies published in international peer-reviewed journals and ranked by the Science Citation Index-expanded or Social Science Citation Index from 1985 to 2015
- Main research approaches used
- Data collection and analysis techniques; sample size and the response rate

30 typologies

How did we review content, themes and recommendations?



57 typologies



How did we review use?

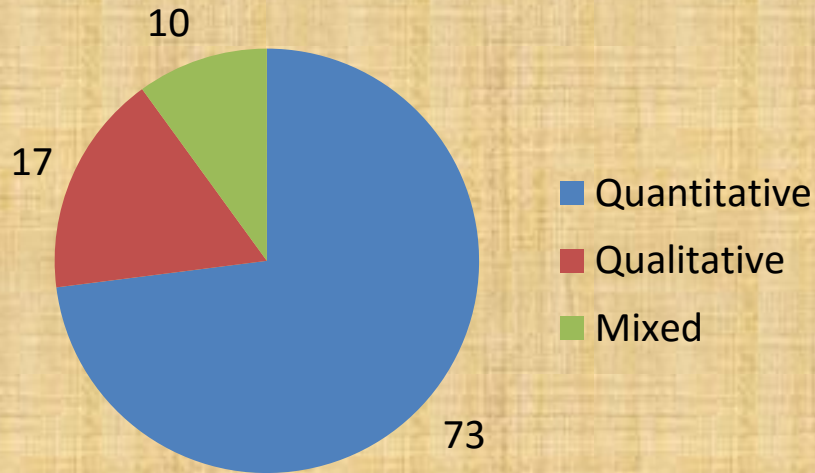
- Internet survey of first authors
 - author's personal opinion on the use of the typology,
 - the evidence of the use of the typology in science and practice
 - citations in scientific papers,
 - use of the typology by politicians, civil servants, domestic stakeholders or media,
 - use of typology in teaching as well as the potential update of the typology over time
- Separate citation analysis was conducted using the Google scholar database

24 responses

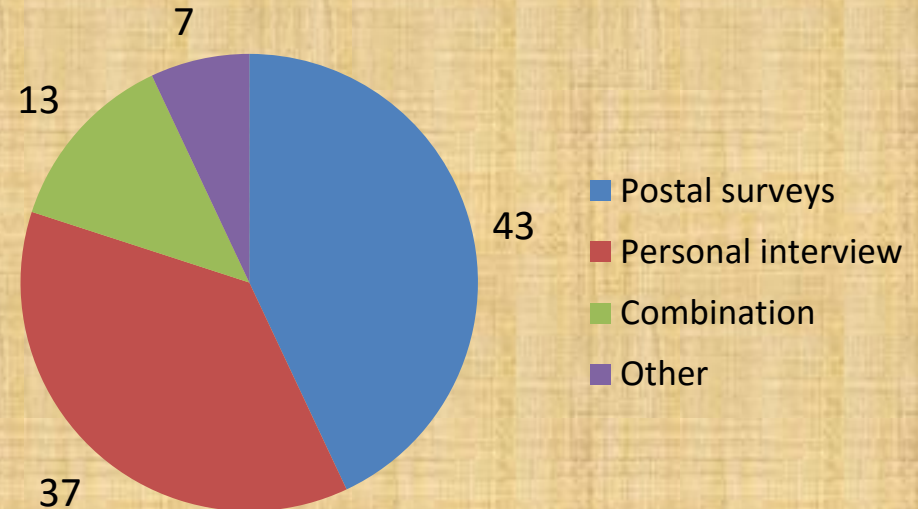
Results

How were typologies produced?

Methods



Methods



Cluster analysis
Q methodology/factor analysis
Probabilistic clustering

Owner types



Trends & Themes

Lifestyle changes

Timber mobilisation

How to steer owners
without regulation

Societal demands for
ecosystem services

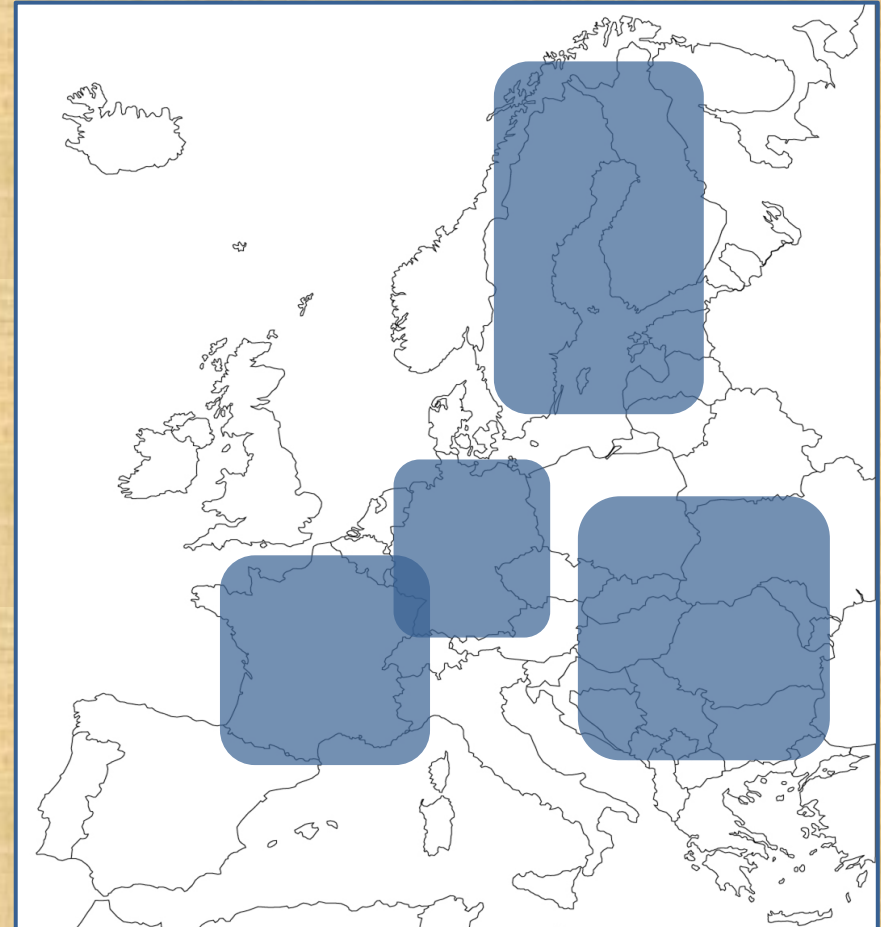
Methodology papers

New owners emerging
due to restitution

1987

2000

2004



Recommendations

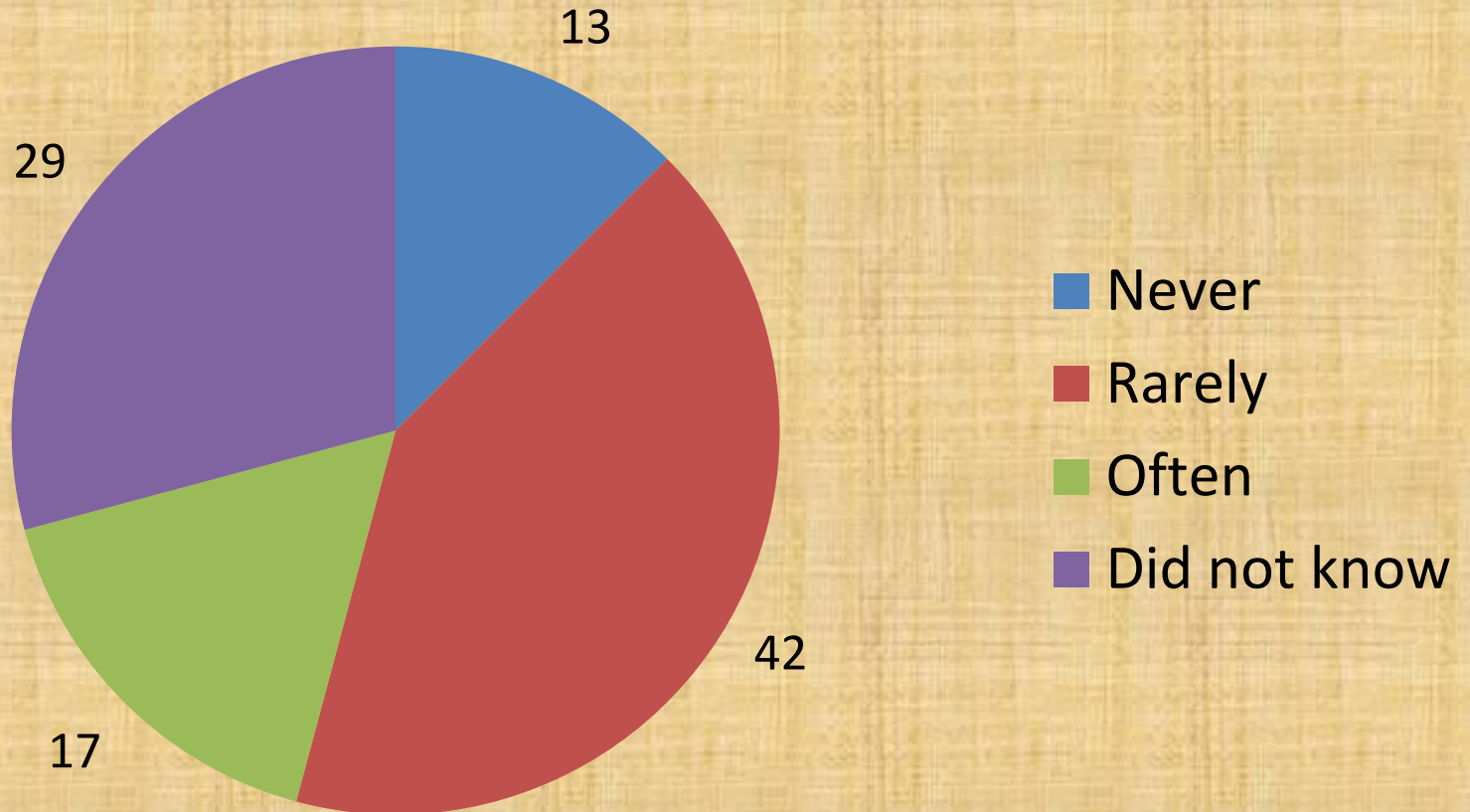
General

“policy-makers need to take into account the diversity in owner types”

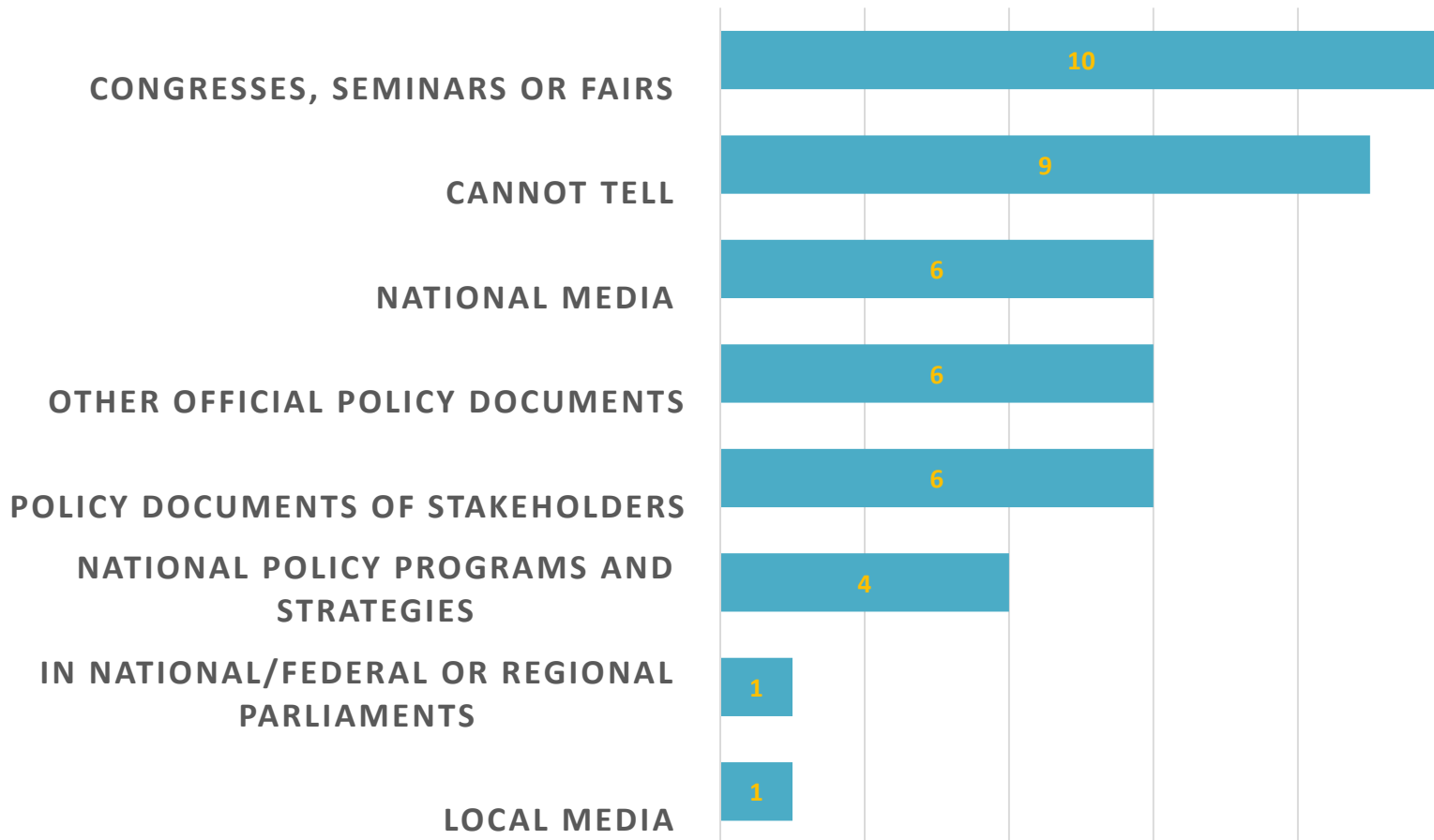
Specific

“face-to-face contact ... the best approach for providing expert advice to economist owners”

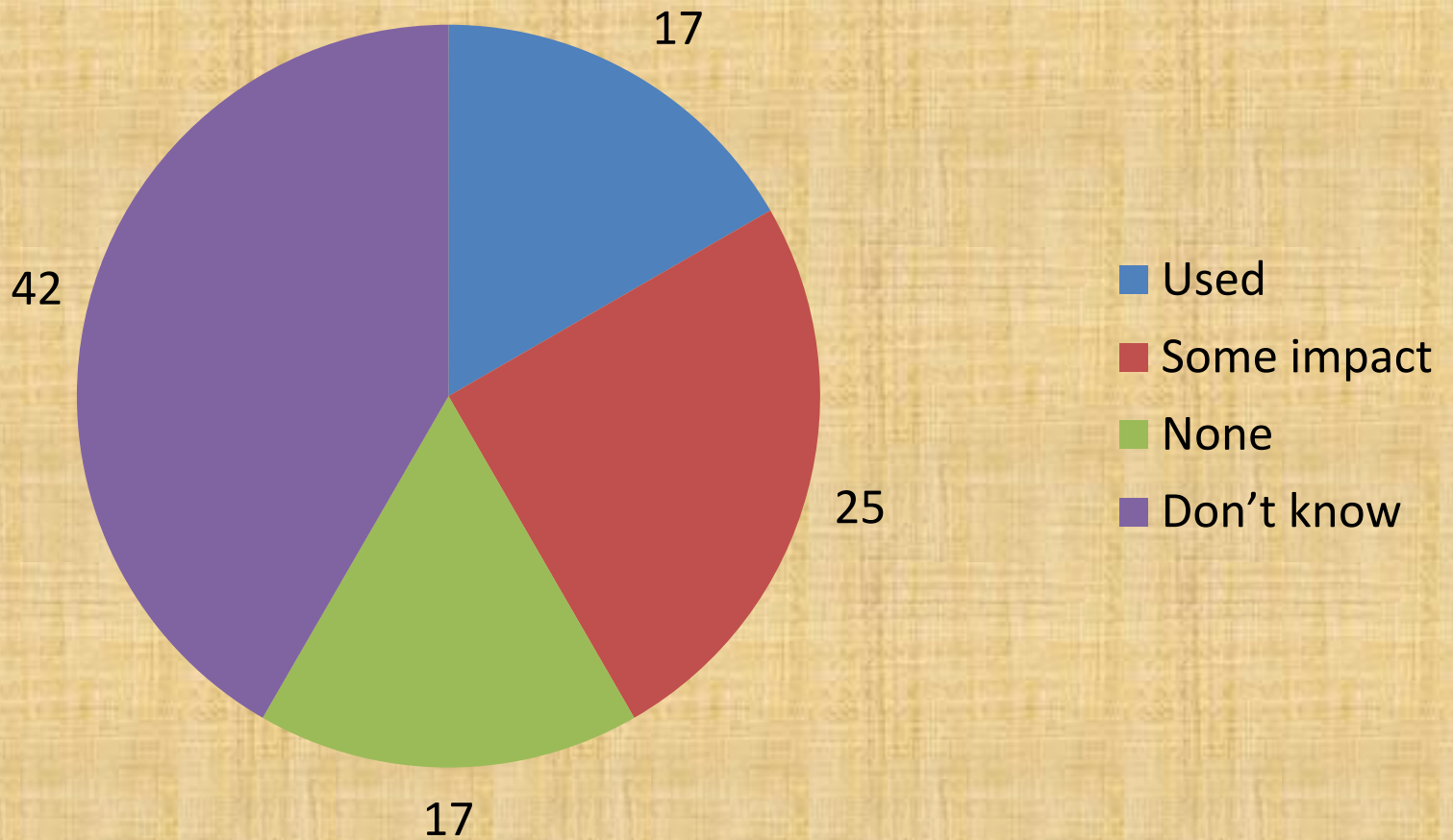
Use by politicians, civil servants and other domestic stakeholders



Where used?



Impact on practice



Use by scientific community

Frequency of citation (no/year)	Number of publications
7 to 13	4
5 to 7	5
3 to 5	11
1 to 3	16
0 to 1	10
0	11

Discussion

- Rarely linked with owner behaviour
- Rarely give rise to specific policy recommendations
- Cross-country analysis not facilitated
- Longitudinal studies rare

Recommendations

- More effort to reach decision-makers
- More specific policy recommendations
- More typology studies linked to owner behaviour
- Need longitudinal studies to be able to understand the “change”
- Publish in high quality journals

Thank you!